



ID  
0  
~  
ID  
15

**X16** DRS-0101  
HerkuleX Servo



**X4** DRB-0006  
Dummy Servo  
(BH/M 2.6X8.0 볼트장착)



**X4** DRB-0001  
Front / Back



**X4** DRB-0002  
Hand



**X4** DRB-0003  
Foot



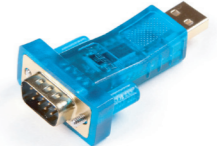
**X4** DCW-0001  
Wheel (White, Ø60)



**X1** DRQ-0001  
AC Adaptor



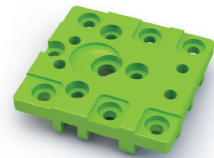
**X1** DRI-0002  
Serial Cable  
(DSUB 9Pin - 3P Audio Jack)



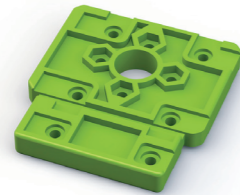
**X1** DRI-0003  
USB to Serial Gender



**X1** DRI-0004  
IR Receiver



**X40** DRB-0004  
Universal Plate



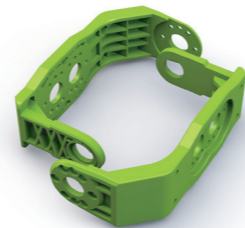
**X8** DRB-0005  
Ankle Plate



**X6** DRB-0008  
U1-type Bracket



**X8** DRB-0009  
U2-type Bracket



**X6** DRB-0010  
U3-type Bracket



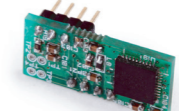
**X1** DRI-0005  
Remote Control



**X1** DRI-0008  
PSD Sensor



**X1** DRI-0007  
ZigBee (별매)



**X1** DRI-0009  
Gyro Sensor (별매)

**1:1 SCALE**

**X40** DRA-0051  
Nut (M2)

**X10** DRA-0052  
Nut (M3)

**X25** DRA-0054  
Bolt (PH/M 2.0X13)

**X50** DRA-0056  
Bolt (PH/M 2.0X4)

**X20** DRA-0057  
Bolt (PH/M 2.0X5)

**X150** DRA-0058  
Bolt (PH/M 2.0X6)

**X30** DRA-0059  
Bolt (PH/M 2.0X8)

**X10** DRA-0061  
Bolt (PH/M 3.0X6)

**X20** DRA-0062  
Bolt (PH/M 3.0X8)

**X60** DRA-0063  
Bolt (CH/T 2.0X4)

**X80** DRA-0064  
Bolt (PH/T 2.0X5)

**X20** DRA-0067  
Horn Bolt  
(BH/T 2.6X8)

**X16** DRA-0069  
Hand Bolt (CH/T 1.7X4)

**X4** Horn Bolt (BH/M 2.6X8)  
(데미서보용)



**X8** DRB-0011  
U4-type Bracket



**X1** DRB-0007  
Battery Case & Holder



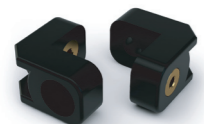
**X1** DRC-005T  
Controller



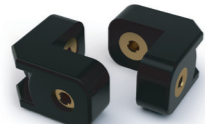
**X1** DRL-0728  
7.4V Li-Po Battery  
(3,000mA)



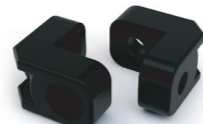
**X20** DRH-1001  
Horn (Plastic)



**X70** DRJ-0001  
L-type Joint  
(Single Nut)



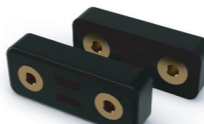
**X10** DRJ-0002  
L-type Joint  
(Double Nut)



**X40** DRJ-0003  
L-type Joint  
(Hole only)



**X10** DRJ-0004  
L-type Joint  
(10.9mm, Hole only)



**X60** DRJ-0006  
L-type Joint  
(12.5mm, Double Nut)



**X4** DRA-0002  
Harness (75mm)



**X4** DRA-0003  
Harness (100mm)



**X6** DRA-0006  
Harness (200mm)



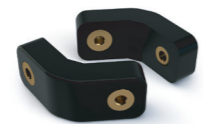
**X2** DRA-0007  
Harness (300mm)



**X20** DRJ-0007  
L-type Joint  
(16.0mm, Hole only)



**X20** DRJ-0008  
V-type Joint  
(12.0mm, Single Nut)



**X20** DRJ-0009  
V-type Joint  
(12.0mm, Double Nut)



**X20** DRJ-0010  
Harness Clamp



**X20** DRJ-0011  
Bushing Set



**X1** DRA-0021  
PSD Harness 3pin (200mm)



**X1** DRA-0027  
IR Receiver Harness 3pin (150mm)